

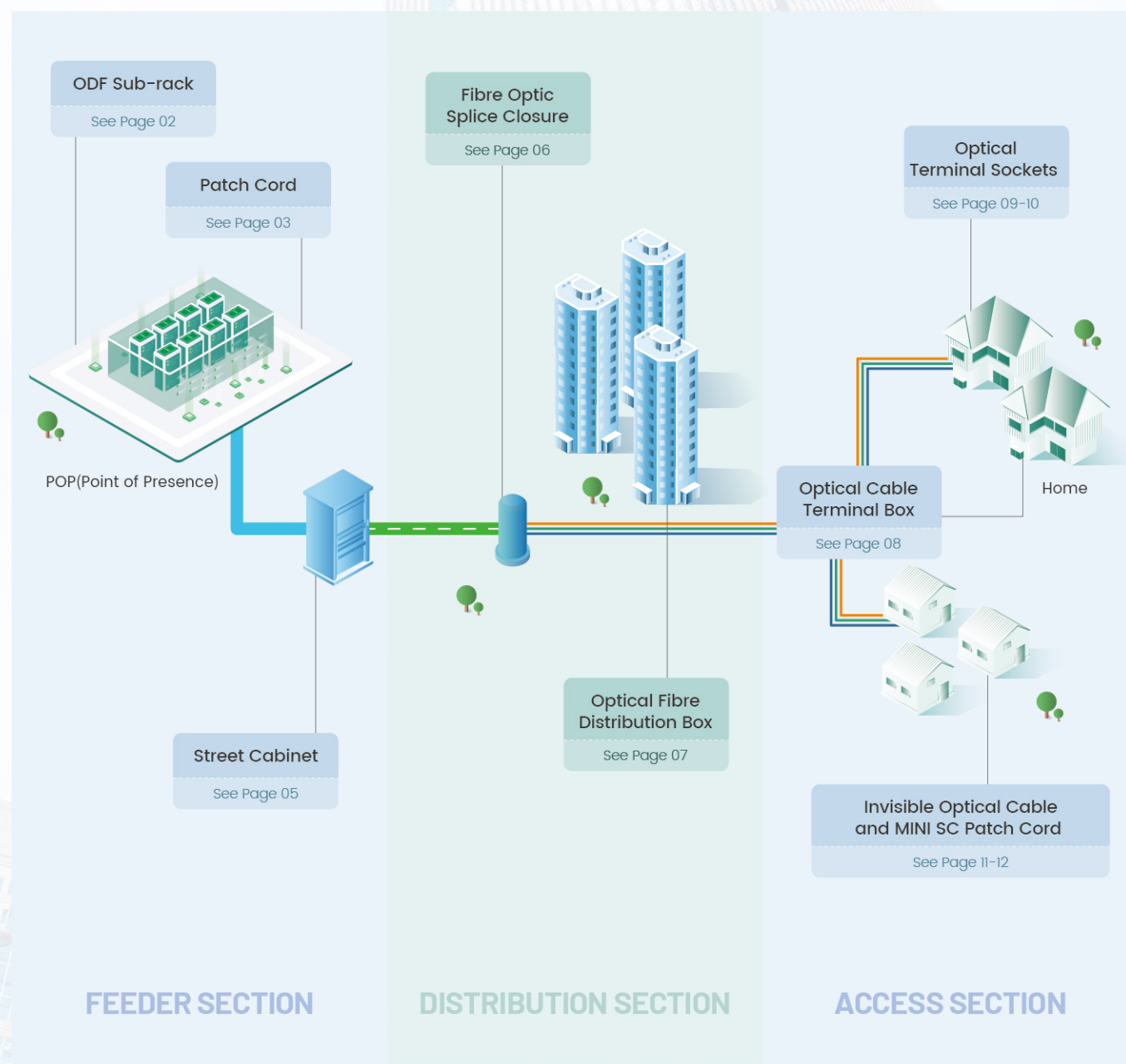
Optic Link Digital World

YOFC ODN Provides Customers with
Optimal Connection and Protection Solutions





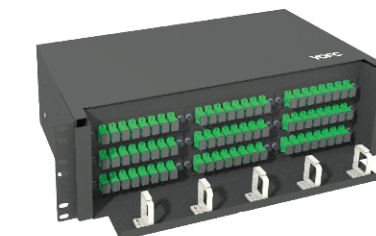
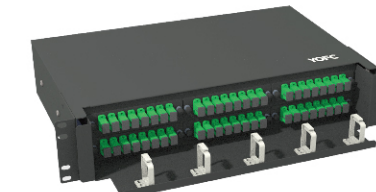
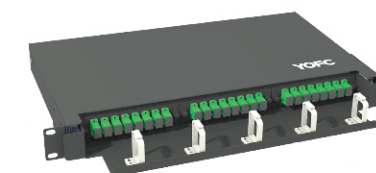
As the world's leading provider of optical fibre preforms, optical fibres, optical fibre cables and integrated solutions, YOFC has always adhered to independent innovation and led the optical communication industry forward. So far, YOFC can provide ODN product solutions to different scenarios and become a comprehensive solution provider of ODN products and engineering services.



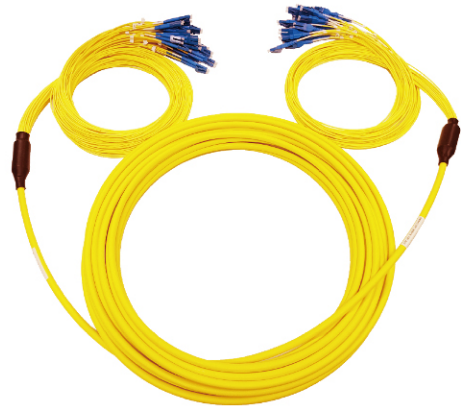
ODF Sub-rack

Highlights

- High density, 1U-capacity up to 48 cores and 2U-capacity up to 96 cores (Duplex LC adapter)
- Noise reduction and pull-out design, with 250mm pull-out distance
- 1 to 3 pieces of adapter panels per U. Unified rack, various adapter panels(LC/SC) are optional, flexible installation and capacity-expansion
- Standard 19 inch installation, high quality cold rolled steel plate with surface spray treatment
- RoHS 2.0



Dimensions H×W×D (mm)	Capacity (Cores)	Note
1U×482×320	12	2×6 cores SC panel + 1×blank panel
	12	2×6 cores FC panel + 1×blank panel
	12	2×6 cores E2000 panel + 1×blank panel
	24	2×12 cores DLC panel + 1×blank panel
	16	2×8 cores FC panel + 1×blank panel
	24	3×8 cores SC panel
	24	3×8 cores FC panel
	24	3×8 cores E2000 panel
	36	3×12 cores DSC panel
	48	3×16 cores DLC panel
2U×482×320	48	6×8 cores SC panel
	48	6×8 cores FC panel
	48	6×8 cores E2000 panel
	72	6×12 cores DSC panel
	96	6×16 cores DLC panel
3U×482×320 (Customized Type)	72	9×8 cores SC panel
	72	9×8 cores FC panel
	108	9×12 cores DSC panel
	144	9×16 cores DLC panel
4U×482×320 (Customized Type)	96	12×8 cores SC panel
	96	12×8 cores FC panel
	144	12×12 cores DSC panel
6U×482×320 (Customized Type)	192	12×16 cores DLC panel
	144	18×8 cores SC panel
	288	18×16 cores LC panel



48 core bundle patch cord

Item	Specifications	
Optical Cable	Fibre	Single mode fibre, G.652D
	Fibre count	48
	Cable attenuation	≤ 0.34 dB / km @1310 nm ≤ 0.20 dB / km @1550 nm
Connector	Insertion loss	Average ≤ 0.12 dB @1310&1550nm ≤ 0.25 dB for > 97% @1310 &1550nm According to IEC 61300-3-4 Method B
	Return loss	Min. 55dB @ 1310&1550nm According to IEC 61300-3-6
Fire Behavior	CPR-Class B2ca s1, d1, a1	



Common patch cord

Cable Performance

Fibre Type	Core/Cladding Dia.(um)	Bandwidth (MHz·km)	Wavelength(nm)	Max. Attenuation (dB/km)
SM G.652D	9/125	NA	1310/1550	0.34/0.20
SM G.657A	9/125	NA	1310/1550	0.35/0.21
OM2	50/125	≥ 500	850/1300	2.3/0.6
OM3	50/125	≥ 2000	850/1300	2.4/0.6
OM4	50/125	≥ 4700	850/1300	2.4/0.6
OM5	50/125	≥ 4700	850/1300	2.4/0.6

Connector Performance

Connector Type	IL(dB)	500 Times Durability Δ IL(dB)	Temperature Cycling Δ IL(dB)
LC/SC/FC/ST/E2000 SM	≤ 0.30	≤ 0.20	≤ 0.20
LC/SC/FC/ST MM	≤ 0.30	≤ 0.20	≤ 0.20

Highlights

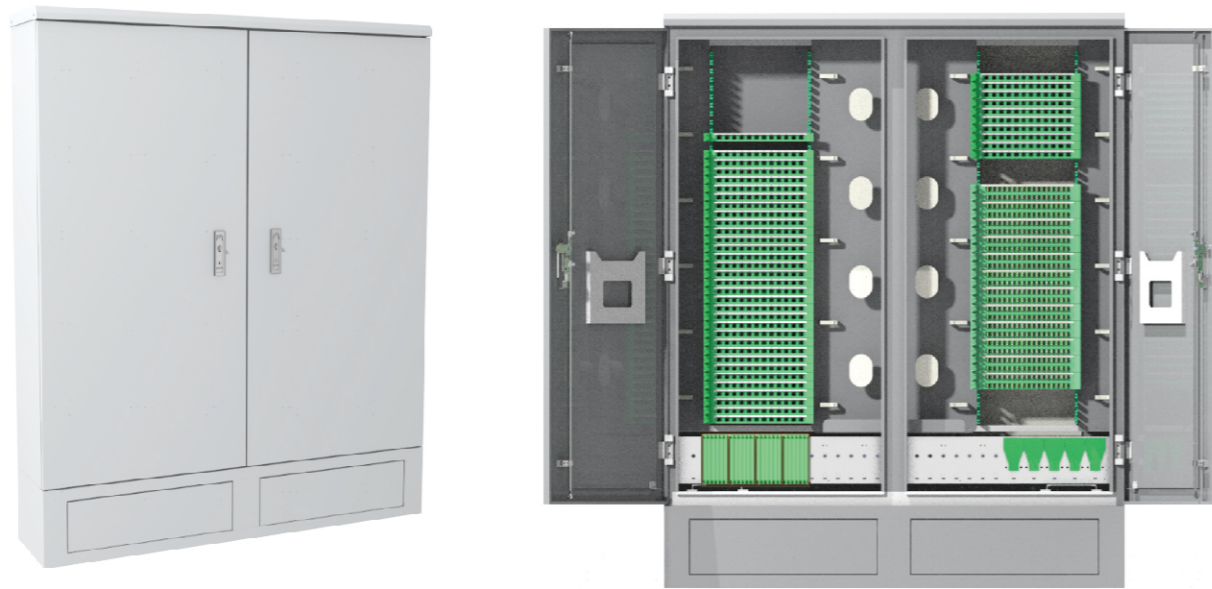
- Provide patch cord that meet various wiring scenarios and different core numbers, with complete connector types such as SC/LC/FC/E2000
- The optical cables commonly fulfilled CE-CPR C_{ca}, customized with CPR B_{ca}
- Connector referred IEC-61300 standard
- Top-level technical characteristics of products reach European operators' demand (eg: Deutsche Telekom)
- RoHS 2.0

CPR

Classification of the Euro Classes According to EN 50575								
	Classification	A _{ca}	B1 _{ca}	B2 _{ca}	C _{ca}	D _{ca}	E _{ca}	F _{ca}
EN 60332	H (mm)	EN 1716 Gross heat of combustion	≤ 425	≤ 425	≤ 425	≤ 425	≤ 425	≤ 425
EN 50399	Flame spread (m)	EN 1716 Gross heat of combustion	≤ 1.75	≤ 1.5	≤ 2.0	-	Additional Criteria D _{ca} -B1 _{ca}	
	Total heat release (MJ)		≤ 10	≤ 15	≤ 30	≤ 70		
	Peak heat release rate (kW)		≤ 20	≤ 30	≤ 60	≤ 400		
	Fire growth rate (W/s)		≤ 120	≤ 150	≤ 300	≤ 1300		
EN 61034 EN 50399	Smoke emissions		s1a, s1b s1, s2, s3					
EN 60754	Acidity	a1, a2, a3						
EN 50399	Flame drops	d0, d1, d2						



Street Cabinet



YFDT-2112Z

Highlights

- High mechanical and environment strength cabinet with double-layer stainless steel casing ensures the protection performance and excellent corrosion resistance & anti-aging ability
- Three point lock, hinge built-in, effective destruction-proof
- Tray type terminating unit, modular design, convenient installation and capacity expansion
- Effective cable fixing device, suitable for ribbon and bunch cable
- RoHS 2.0



Item	Specifications
Dimensions (H×W×D) (mm)	1750×1400×325
Material	· Cabinet: Double-layer stainless steel · Internal non-metallic parts: Flame retardant of PC+ABS
Color	RAL 9003
Termination Capacity (Cores)	Max 1296
Splicing Capacity (Cores)	Max 288 (Direct splicing trays 24 pcs, 12 core per tray)
Number of Cable Ports (pcs)	29
Fibre Cable Diameter (mm)	Ø5-26
Splitter Type	Tray splitter
IP Grade	IP55
Durability of Adapter	1000 times
Flammability	UL94-V0
Insertion Loss(dB)	≤0.3
Return Loss(dB)	APC≥60, UPC≥50

Fibre Optic Splice Closure



Highlights

- Support for carrying customer information through RFID, compact design with smaller dimensions and light weight
- Optical fibre bending protection radius greater than 30mm
- Fibres can be reversed at the top and bottom
- The cable ports support both mechanical and heat-shrink seal
- Serialized product design can meet the needs of multi capacity



YSSC-3328

Item	Specifications	
	YSSC-3328Z2	YSSC-3328Z
Dimensions Height× Diameter (mm)	428×242	536×242
Capacity	288	576
Cable Ports	· 2 pass-through · 8 branches	· 2 pass-through · 8 branches
Applicable Cable Diameter	· Branch cable port: φ2-16 mm · Pass-through cable port: φ5-20 mm	
Sealing Method	Mechanical seal & Heat-shrink seal	
Installation Method	Aerial, wall and pole-mounted	
Protection Level	IP 68	



Optical Fibre Distribution Box



Highlights

- Beautiful appearance, environmental friendly and anti-aging
- The unique anti-theft design ensures that the box will not open abnormally
- Partition management of termination and splicing. Clear interface for optical cable and pigtail routing, convenient for operation and maintenance
- The capacity expansion and splitting scenarios are fulfilled by changing the splicing tray
- Wall-mounted or pole-mounted, suitable for both indoor and outdoor uses
- Serialized product design can meet the needs of multi capacity
- RoHS 2.0



YFAT-4224F2

YFAT-4248F

Item	Specifications	
	YFAT-4224F2	YFAT-4248F
External Dimension (mm)	340×250×110	420×320×130
Capacity (Max)	24 cores (SC), 48 cores (DLC)	48 cores (SC), 96 cores (DLC)
Number of Cable Ports	<ul style="list-style-type: none"> • Pass through cable port: 1 pcs • Branch cable port: 3 pcs 	<ul style="list-style-type: none"> • Pass through cable port: 1 pcs • Branch cable port: 4 pcs
Adapted Cable Diameter (mm)	Pass through cable port: Φ8~Φ19 Branch cable port: Φ8~Φ19	
Material	Housing: High-strength PC+ABS Internal components: ABS Metal accessory: High-quality stainless steel	
Color	Gray	
IP Grade	IP65	
Insertion Loss(dB)	≤0.3	
Return Loss(dB)	APC≥60, UPC≥50	
Random Connection	Maximum≤0.3dB	
Repeatability	500 cycles	



Optical Cable Terminal Box



YOTB-5104Z

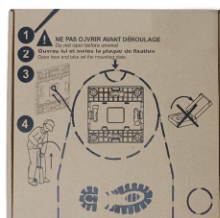
Highlights

- Compact structure and beautiful appearance
- Support air blowing scenarios and vertical wiring scenarios
- The adapter can be installed at the surface or inside of the box
- Multiple types of splicing tray optional, supporting the installation of crimp protector, heat shrinkable fusion protective sleeve and splitter
- Optional pigtails storage boxes
- RoHS 2.0

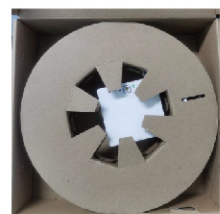
Item	Specifications
Size (H×W×D, mm)	243×154×44
Splicing Capacity	12 cores
Splitter Capacity	2pcs PLC 1:4 or 1pcs PLC 1:8
Terminal Capacity	SC: 4 cores/DLC: 8 cores
Cable Inlet Number	2pcs (Bottom 1*Φ3~Φ14mm, Top 1*Φ3~Φ10mm)
Cable Outlet Number	4pcs*Φ1~Φ10mm, or 8 pcs*Φ1~Φ3mm
Protection Level	IP55



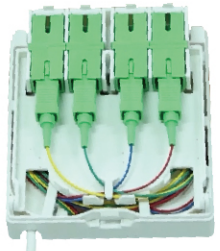
Optical Terminal Sockets—OTS KITS (SC)



OTS 1 Core



OTS 2 Core



OTS 4 Core

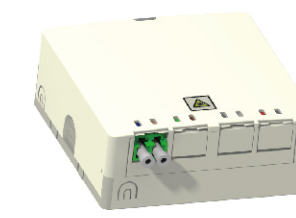
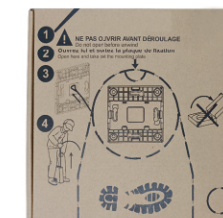
Highlights

- Beautiful appearance and small size
- The dust cover can limit the position, making it convenient for one hand operation
- Independent bottom plate design for easy installation
- Supports cable entry in 4 directions
- Can be installed by rotating 90° arbitrarily
- Support DIN rail, bottom box, and wall mounted installation
- Roll packaging for easy pull-out
- RoHS 2.0

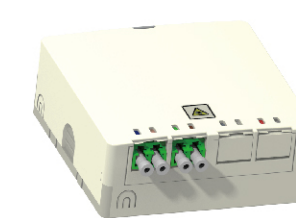
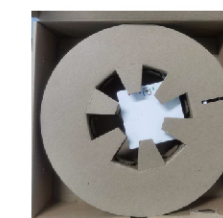
Item	Specifications
Size (H×W×D, mm)	80×80×31
Splicing Capacity	Max 4 cores
Applicable Cable Type	· Round type: $\leq \phi 5.2\text{mm}$ · Bow type: 2×3mm
Adapter Type	SC
Terminal Capacity	Max 4pcs SC
Protection Level	· IP50 (Wall mounted) · IP40 (DIN mounted)
Min Bending Radius	$\geq 15\text{mm}$
Flame Rating	UL94-V0
Fibre Type	G.657A2
Cable Length	Typical 40m, can be customized



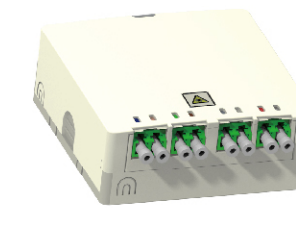
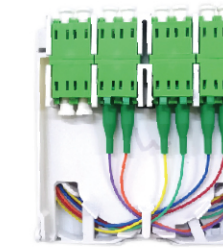
Optical Terminal Sockets—OTS KITS (DLC)



OTS 2 Core



OTS 4 Core



OTS 8 Core

Highlights

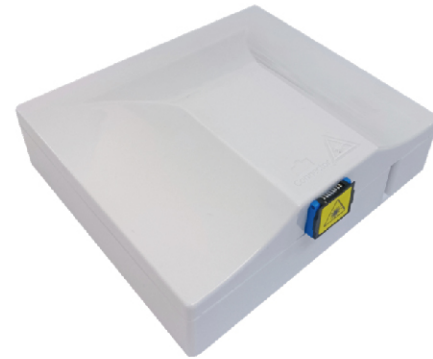
- Beautiful appearance and small size
- Independent bottom plate design for easy installation
- Supports cable entry in 4 directions
- Can be installed by rotating 90° arbitrarily
- Support DIN rail, bottom box, and wall mounted installation
- Roll packaging for easy pull-out
- RoHS 2.0

Item	Specifications
Size (H×W×D, mm)	80×80×31
Splicing Capacity	Max 8 cores
Applicable Cable Type	· Round type: $\leq \phi 5.2\text{mm}$ · Bow type: 2×3mm
Adapter Type	DLC, LC, SC
Terminal Capacity	Max 8 pcs LC
Protection Level	· IP50 (Wall mounted) · IP40 (DIN mounted)
Min Bending Radius	$\geq 15\text{mm}$
Flame Rating	UL94-V0
Fibre Type	G.657A2
Cable Length	Typical 40m, can be customized

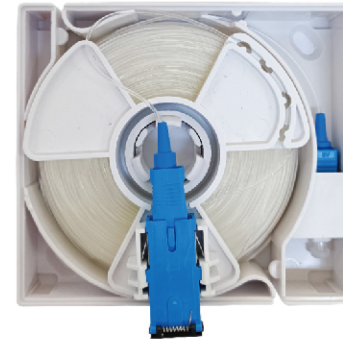
Invisible Optical Cable and Storage Box



Invisible optical cable



Invisible optical cable storage box



Highlights

- Tiny and transparent optical cable, immersed with the wall without being discovered
- The installation is quiet and simple without damaging the original decoration
- Supper strong bending resistant optical fibre gives minimal attenuation with the corner bending
- Box storage the optical cable, roll package design
- RoHS 2.0

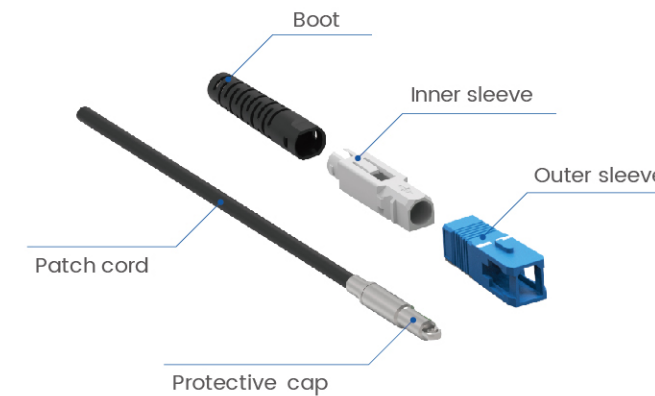


Item	Specifications
Dimension (H×W×D) mm	93×83×34
Box Material	ABS
Adapter	1pcs SC/APC
Max Capacity	40m
Bending Radius	≥30mm
Fibre Type	G.657B3 single mode
Fibre Diameter	900±50µm
Insertion Loss	≤0.3dB
Return Loss	UPC≥50dB/ APC≥55dB
Cable Attenuation	<ul style="list-style-type: none"> • ≤0.4 dB/km @1310nm • ≤0.3 dB/km @1550nm
Additional Loss	<ul style="list-style-type: none"> • BIL@1550nm≤0.15dB/circle • BIL@1625nm≤0.45dB/circle
Max. Tension Strength	<ul style="list-style-type: none"> • Long term: 5N; Additional loss ≤0.03dB • Short term: 20N; Additional loss ≤0.03dB

MINI SC Patch Cord



MINI SC patch cord



Highlights

- Small size, suitable for passing through walls or pipes
- Tensile strength, the use of metal protective cap can effectively protect the ceramic ferrule and provide sufficient tensile force during the process of passing through the pipe
- Easy to install, no tools required for quick assembly into a complete SC connector
- RoHS 2.0

Item	Specifications
Dimensions of MINI SC (mm)	<ul style="list-style-type: none"> • Maximum outer diameter: φ 4.8 • Length: 29.5
Fiber Type	G.657A2, G.657B3
Applicable Cable Type	<ul style="list-style-type: none"> • Bow type drop cable (3mm x 2mm) • Round type drop cable (φ 3mm)
Connector Type	<ul style="list-style-type: none"> • A-end connector: MINI SC • B-enc connector: MINI SC, SC, LC
Length (m)	1, 5, 10, 20
Tensile Strength (N)	≥ 100
Minimum Inner Diameter of Threading Pipe (mm)	≥ 5.5
Minimum Bending Radius (mm)	≥ 84
Connector Insertion Loss (dB)	UPC ≤ 0.3, APC ≤ 0.3
Connector Return Loss (dB)	UPC ≥ 50, APC ≥ 55
Reseating Durability (times)	> 200

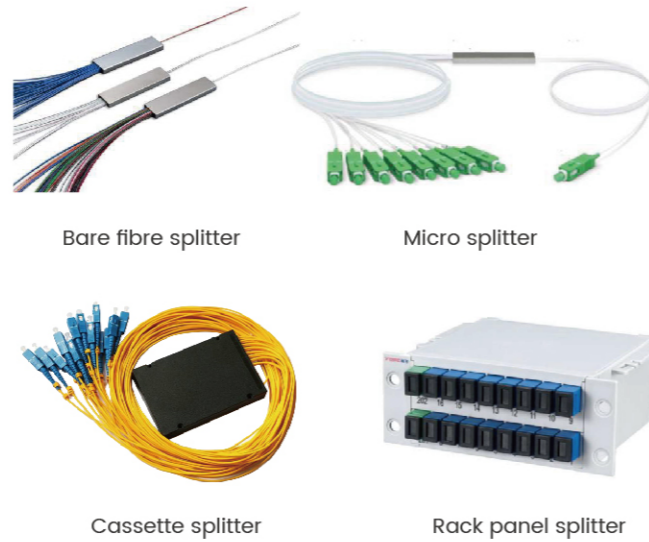


Optical Splitter



Highlights

- Various packaging types are provided: micro type, cassette type, rack panel type to meet various application scenarios
- Reliability performance test for YOFC optical splitter to meet higher requirements:
 - Passed the +85 °C, 85% RH high temperature and humidity test for 2000 hours
 - Passed the +85 °C high temperature test for 2000 hours
 - Passed the - 40 °C low temperature test for 2000 hours
 - Passed 500 times of high and low temperature cycling tests at - 40 °C~+85 °C
- RoHS 2.0

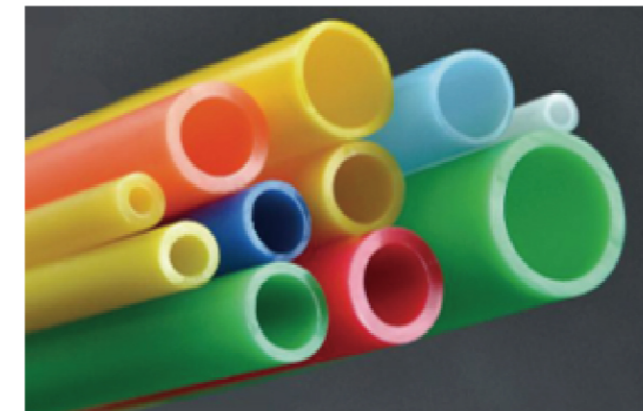


Splitter Dimensions					
Splitter Type	Bare Fibre Splitter	Micro Splitter	Cassette Splitter	Rack Panel Splitter	
Dimensions (mm) (L×W×H)	1:2				
	1:4	40×4×4	60×7×4	100×80×10	100×130×25
	1:8				
	1:16	50×7×4	60×12×4	120×80×18	100×130×50
	1:32		80×20×6		100×130×102
	1:64	60×12×4	100×40×6	140×114×18	100×130×206

Splitter Dimensions					
Splitter Type	Bare Fibre Splitter	Micro Splitter	Cassette Splitter	Rack Panel Splitter	
Dimensions (mm) (L×W×H)	2:2				
	2:4	40×4×4	60×7×4	100×80×10	100×130×25
	2:8				
	2:16	50×7×4	60×12×4	120×80×18	100×130×50
	2:32		80×20×6		100×130×102
	2:64	60×12×4	100×40×6	140×114×18	100×130×206

Item	Specifications												
Split Ratio	1:2	1:4	1:8	1:16	1:32	1:64	2:2	2:4	2:8	2:16	2:32	2:64	
Insertion Loss (dB)	Typical	3.6	7.0	10.3	13.6	16.6	20.1	4.2	7.2	10.6	13.8	17.0	20.5
	Maximum	4.3	7.4	10.7	13.9	17.2	21.5	4.5	7.7	11.0	14.8	17.9	21.5
Insertion Loss Uniformity (Max) (dB)	0.5	0.8	0.8	1.4	1.5	2.0	0.8	1.0	1.2	1.5	1.8	2.5	
Polarization Loss (Max) (dB)	0.2	0.3	0.3	0.3	0.3	0.5	0.2	0.3	0.3	0.3	0.3	0.5	
Return Loss (dB)	APC ≥ 55, UPC ≥ 50												
Directivity (dB)	≥ 55												
Fibre Type	G.652D, G.657A or customized												
Operating Wavelength	1260~1650												
Connector Type	SC, FC, LC												

Accessories—HDPE Micro Duct



Highlights

- The outer diameter of micro duct is from 5mm to 18mm
- The inner wall is a smooth structure with silicon layer or a longitudinal ribs structure, which can effectively reduce the friction coefficient of the inner wall
- Can be used to enlarge the capacity of existing pipeline and realize the maximization of pipeline capacity
- Meet the flame retardant requirements of buildings, metro and other environments

Spec	Wall Thickness mm	SDR	Nominal Weight Kg/Km	Min Bend Rad mm	Max Pull N	Drum Length m
5/3.5mm	0.75	6.7	10	60	185	3000
7/3.5mm	1.75	4	28	84	520	3000
8/6mm	1.0	8	22	96	385	3000
10/8mm	1.0	10	28	120	520	3000
12/10mm	1.0	12	34	144	620	2000
14/10mm	2.0	7	73	168	1350	2000
16/12mm	2.0	8	84	192	1600	2000
18/14mm	2.0	9	98	252	1800	2000



Accessories—HDPE Tube Bundle



Direct Buried (DB) Tube Bundle

The bundle with two layers of outer sheath layer has strong compressive resistance and can be directly buried underground without additional pipeline protection. Can be directly buried, directional drilling and other ways of laying.



Highlights

- Suitable for direct-buried and direct-installation applications
- Standard specification of 2, 4, 7, 12, 19 and 24-ways bundles, which can be customized
- Meet the flame retardant requirements of buildings, metro and other environments
- Can be laid by excavation, directional drill, overhead and trench
- Suitable for long-distance trunk lines, WAN, LAN, etc., with flexible scalable upgrade potential



Series	Ways	Drum Length	Nominal Weight	Size	Max Pull	Min Bend Rad	Crush
		m	Kg/Km	mm	N	mm	N
5/3.5mm	2	2000	121	16*11	1300	220	2000
	4	2000	199	18.9	2150	380	2000
	7	2000	258	21.8	2780	440	2000
	12	2000	362	27.1	2900	540	2000
	19	1000	480	31.8	5180	640	2000
	24	1000	610	36.8	6580	740	2000
10/8mm	2	2000	260	26.8*16.8	2800	340	2000
	4	2000	397	30.9	4280	620	2000
	7	2000	545	36.8	5880	740	2000
12/10mm	2	2000	304	30.8*18.8	3280	380	2000
	4	2000	468	35.8	5000	720	2000
	7	2000	641	42.8	7000	880	2000

Accessories—Micro Duct Connector



Highlights

- Easy installation, without any special tools
- High temperature resistance -40°C~ 65°C
- High pressure resistance
- Standard EN50411-2-8

Item	Picture	Function
Straight Connector		· Connect two micro ducts which are the same outer diameter
Reducer Connector		· Connect two micro ducts which are different outer diameter · Internal cone hole to prevent fibre hang up
End Stop Connector (End Cap)		· Used to seal an open micro duct
Gas Block Connector		· Avoid fluid (gas) entering the micro duct and damage the equipment



Accessories—Manhole Chamber



Load Capacity	EN124 B125	
Detail Size and Specifications (Unit: mm)	L	527
	L1	500
	H	25
	D1	425
	D2	455
	O	450
	F	545
Weight	31.5 kg	



Highlights

- Price: Economical production cost than Concrete Manhole of same Level
- Logistics: Knock-Down Design, 4 times of Concrete Concrete Manhole, Transport save 3/4
- Installation: Less labor and big equipment required
- Time: Installation time reduce 50%

Feature:

- 1pc cover have two S.S screws lock fasten cover with chamber, high safety and easy maintenance, and two lifting holes with slipknot bolts for the easy lifting
- 1pc bottom plate with four locating pin for the easy install the side panel
- 4pcs side panel fastened by S.S Screws one by one, and the packing will be one on top of another in pcs
- The completely manhole chamber with lid with 1pc cover, 4pcs side panel, 1pc bottom plate
- Various color options is available and Black or Grey are recommended for the lid

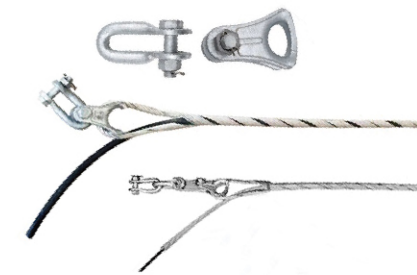
Accessories—Aerial Fittings



YOFC provides a complete set of aerial fittings, including ADSS optical cable, OPGW optical cable, and drop cable. The fittings can be customized according to the cable parameters (cable diameter, RTS, span).

Highlights

- Prestranded fittings, tensile strength can reach 95% of the cable RTS, with high stability and reliability
- Anchoring aerial clamp, high safety, stable structure
- No additional tools are required for installation



Tension Clamp



Suspension Clamp



Anchoring Aerial Clamp

Model of Tension Clamp	Cable Diameter	Span (m)	Tension Strength (KN)
ANL 020/1250	11.6< ϕ <=12.5	100-200	20
ANL 030/1250	11.6< ϕ <=12.5	200-300	30
ANL 050/1450	13.6< ϕ <=14.5	400-500	50

Model of Suspension Clamp	Cable Diameter	Span (m)	Vertical Load(KN)
ACD 1220	11.6< ϕ <=12.2	100-200	20
ACL 300/1220	11.6< ϕ <=12.2	200-300	30
ACL 500/1290	12.3< ϕ <=12.9	400-500	50

Model of Anchoring Aerial Clamp	Cable Diameter	Span (m)	Failure Load(KN)
PYN-5mm	5.0 round cable	100	1
TF-1600A	2*3 bow type cable	50	0.4